



## Security and Password Replacement

# U.are.U<sup>®</sup> Pro

## Biometric Authentication System

U.are.U Pro is a biometric authentication system for large and small enterprises that want to eliminate the burdens and security problems of password-based logon. U.are.U Pro uses advanced fingerprint recognition technology to heighten security and replace passwords. U.are.U Pro for Active Directory is specifically designed to take full advantage of the enterprise-class directory services and management capabilities of Microsoft® Windows 2000 Active Directory.

### The Password Security Problem

Most organizations face increasing pressure to secure access to their network and applications. Their efforts are constrained by the practices of frustrated users who create trivial passwords or write them on Post-it® notes. Password-based user authentication remains the weakest link in the security chain and a large burden for end-users and IT support staff.

### Biometric Authentication

U.are.U Pro utilizes state of the art fingerprint recognition to allow users to securely and quickly log on with the touch of their finger. Unlike password and token based authentication, biometric authentication is based on who you are. Only biometric authentication eliminates the burden and usage problems associated with passwords and tokens. The entire fingerprint recognition subsystem, including the optics, firmware, driver and the software recognition

engine, is designed and optimized by DigitalPersona™ for unmatched performance. With the first touch of your finger, and over time with many users, you'll experience why U.are.U fingerprint recognition technology is consistently rated the best in the industry.

### Password Replacement

Imagine never having to remember or type a password again. The One Touch™ security applications securely store user passwords and lock them with the users unique fingerprint. Easier to remember and much more secure than passwords, users access the network and applications with a tap of their finger. Best of all, the software is easy to set-up and requires no scripting or programming.

### Heightened Security

We know that enforcing password security is nearly impossible. U.are.U Pro makes it easy for users to maintain security because it's based on who they are (not what they can remember). U.are.U Pro also delivers additional security capabilities, such as two factor authentication, to support a full range of security needs. Furthermore, U.are.U Pro is a highly secure, end-to-end system. From the sensor to the server database, the system uses encryption and data signature technology to preserve privacy and system integrity.

### Easy to Own

Beyond the benefits of heightened security and convenient logon, you'll also appreciate how easy it is to own U.are.U Pro. The system management capabilities support the largest enterprise deployments and will provide lower support costs than password-based authentication.



# U.are.U Pro for Active Directory

## Specifications

### Desktop/Client Applications

#### Minimum System Requirements

- Supported operating systems
  - Windows XP or 2000
- Hardware requirements
  - Pentium processor
  - 50 MB avail hard disk space
  - USB Port

#### Biometric Support

- Biometric software features
  - Fingerprint recognition algorithm
  - Local or server-based authentication
- Supported fingerprint sensors
  - All U.are.U Sensors
  - U.are.U Fingerprint Keyboard

#### OS Logon

- Logon to local PC account
  - User identification/authentication
  - Windows XP and 2000
- Logon to network account
  - User identification/authentication
  - Windows 2000 Networks
  - Cached credential support
- User identification
  - Fingerprint identification
  - Keyless logon for most recent users (up to 20 users)
- User authentication
  - Username and credential(s)
  - Fingerprints and/or OS psword
  - Administrative policy control

#### Application Logon

- Logon to Applications
  - Fingerprint verification of current Windows user
  - Supports Win 32 logon screens
  - Supports standard HTML logon screens
  - No scripting or programming required

#### PC Unlock

- Lock Windows session
  - Windows lock command
  - Windows screen saver lock
- Unlock Windows session
  - User identification/authentication
  - By current user or administrator
  - Enforces logon authentication policy

#### File Encryption

- Encrypt/decrypt files and directories
  - Fingerprint verification of current Windows user
  - 128-bit, RSA RC4 stream encryption
  - Integrated into context menus
  - Data recovery utility

#### Deployment Support

- Custom installation
  - Select applications
- Remote installation
  - Supports MSI compatible installers
  - Supports Win 2000 GPO installation
- Deployment options
  - Standalone PC
  - Networked PC
  - Networked PC with server
  - Laptop PC (docked/undocked)

### Server Software

#### Minimum System Requirements

- Supported operating systems
  - Windows 2000 Server
  - Installs on domain controller(s)
- Hardware requirements
  - Pentium processor
  - 10 MB avail hard disk space
  - Additional 1 KB to 5 KB AD database storage per registered user

#### Database Support

- Windows 2000 Active Directory
  - Windows user record extension
  - Schema extension utility
  - Access control

#### Fault Tolerance

- System data replication
  - Windows 2000 replication services
- Authentication services
  - Automatic failover

#### Scalability

- Up to 100,000 users
- Load balancing
- 1000 users per server

#### Security

- Server-based authentication
- Data encryption
  - User data (pswrds, FPs, etc)
  - All client/server communications
  - 128-bit / RSA RC4 stream encryption
- Data signature
  - User data (pswrds, FPs, etc)
  - 1024-bit RSA signature

#### Auditing

- Centralized audit logs
  - Domain-wide support
  - Windows 2000 security and system event logs

#### Deployment Support

- Schema extension utility
  - Applies to entire AD Forest
- Server discovery
  - Domain based
  - DNS registration
  - Workstation to server
  - Server to server

### System Administration

#### Administrator user interface

- Native Windows 2000 administration via GPO

#### Administrator access rights

- Supports Win 2000 delegated administration

#### Security settings

- Cached credential
- OS logon policy
- Server authentication
- False accept rate

#### Performance settings

- Logon identification list
- Max fingers per user

#### Auditing

- Windows event log
- Selectable log entry
- Supports report filtering

### System Security

#### Data Encryption

- User data (pswrds, FPs, etc)
- All client/server communications
- 128-bit / RSA RC4 stream encryption
- 128-bit / Tiny Encryption Algorithm
- Data Signature
  - User data (pswrds, FPs, etc)
  - 1024-bit RSA signature

### Fingerprint Sensor

#### Performance

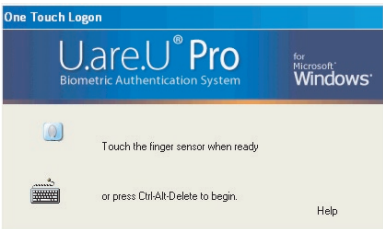
- Self-calibrating
- Auto image capture
- Image captured 'wink'
- Rotation invariant

#### Security

- Latent image rejection
- Encrypted transmission
- Challenge-response link

#### Deployment Support

- Plug and play USB device
- Packaging Options
  - Standalone USB peripheral
  - Keyboard integrated



Log on to your Windows user account with the touch of a finger using One Touch Logon



Use your finger to log on to any application (or web site) using One Touch Internet

## Pro Workstation Packages

### Sensor Package (Part #83211-001)

- Workstation Software CD
- Administrator Guide
- Quick Install Card

### Keyboard Package (Part #83230-001)

- Workstation Software CD
- Administrator Guide
- Quick Install Card

## Pro Server Package

### Server Software (Part # 63001-001)

- Server Software CD
- Administrator Guide
- 10 User Access Licenses

### User Access License (Part #93002-001)

- License Certificate