

Server Software

The next evolution in network authentication and security

For Windows[®] 2000
or Windows NT[®] domain controllers

What's in it for you?

- Extends the capabilities of U.are.U Pro Workstation
- Improved administration support
- Secure, server-based authentication
- Central storage with backup server support
- User roaming

If your organization requires the extended operational, authentication, and administrative capabilities of the U.are.U Pro Fingerprint Security System, then U.are.U Pro Server Software is for you. This software works with U.are.U Pro Workstation to create a comprehensive authentication system for an enterprise environment.

Simplify System Administration

Enhanced by the U.are.U Pro Server Software package, U.are.U Pro Administrator Console Software allows you to quickly and effortlessly manage individual users and desktops.

U.are.U Pro Server Software extends the manageability of the system by giving you, the system administrator, the ability to establish policies and security settings – for individual users or an entire domain.

Support User Roaming

U.are.U Pro Server Software supports both user and administrator mobility within your enterprise.

Once you've installed the software on a Windows domain, the system supports user roaming through central storage and remote access to user records. In this context, "roaming" means the capability of a user to logon to the network domain through any U.are.U workstation that includes a centrally stored authentication policy, as well as credentials for that specific user.

Create Backup Capabilities

U.are.U Pro Server Software provides backup authentication services when your primary domain controller is unavailable. System data is replicated on all backup domain controllers on which U.are.U Pro Server Software is installed.

PKI-encrypted Communications

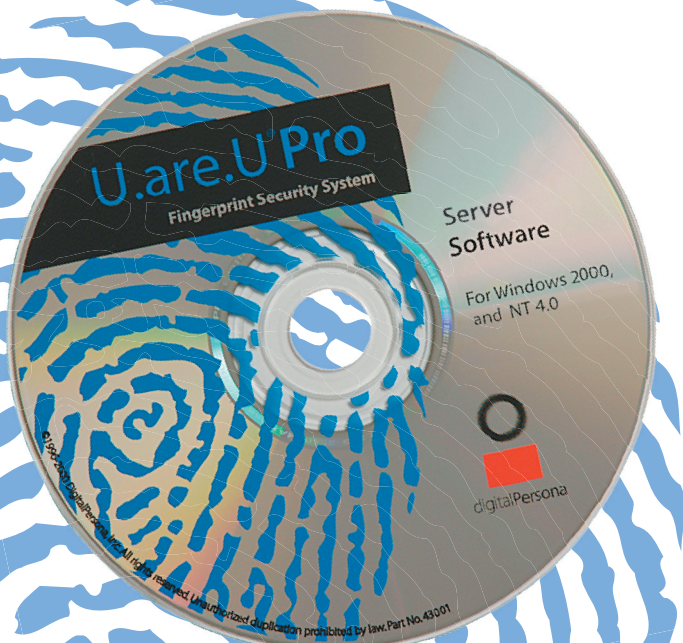
Providing high-security communication channels throughout the system, U.are.U Pro Server Software acts as a central authority, automatically issuing X.509 digital certificates to all U.are.U Pro workstations for secure, encrypted communications.

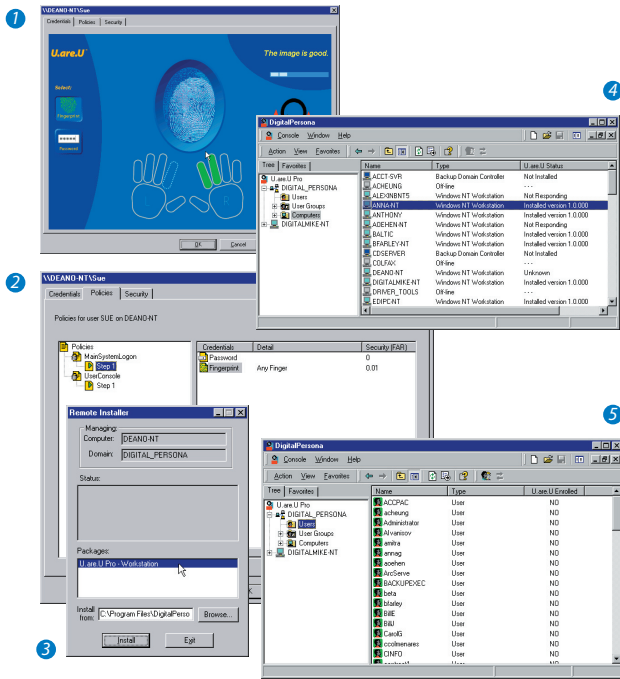
Enjoy Added Convenience

You no longer have to choose between security and convenience. U.are.U Pro is the only authentication product that both heightens security while providing added usability. No more passwords to remember. Best of all, no more need to periodically enforce password changes. With the touch of a finger, authorized users gain access to enterprise information, while unauthorized users are locked out. Best of all, forgotten passwords are eliminated, along with tense phone calls by frustrated users.

Cut Support Costs

What would life look like if you could eliminate half your support requests? Today, roughly 40% of IT administrators' phone calls are password-related. As those are wiped out, you've gained back nearly half of your time.





The Server Software adds these capabilities to your Administrator Console (included with U.are.U Pro Workstation Software):

- 1 Users can self-enroll from their desktops or Administrators can choose to enroll users from a central console.
- 2 Authentication policies can be set from a single console for domains, users, or workstations. Authentication policies can require multiple steps and multiple credentials, if needed.
- 3 Software can be remotely installed on any desktop on the network.
- 4 Quickly and easily monitor software status of all workstations and software version inventory.
- 5 The system is fully integrated into Windows and uses the existing user database for Domains. Administration is as simple as standard Domain administration.

U.are.U Pro Server Packages

Server Software Package

Part #63000-001

- U.are.U Pro Server Software
- 25 User Access License

Additional User Access License

Part #93001-001

- Single User Access License

U.are.U Pro Server Software supports:

- User Roaming
- Domain-Wide Administration
- Secure Server-Based Authentication
- Enhanced security for Microsoft® Windows® 95/98/Me clients

Specifications

Minimum System Requirements

- Windows NT 4.0 Server with Service Pack 4 configured as a PDC or BDC

or

- Windows 2000 Server configured as a mixed-mode domain controller
- Pentium-class processor
- 32 MB RAM (64 MB recommended)
- 6 MB hard disk space

System Management

Administrator Software

- Controlled access
 - Windows Administrator only
 - Authentication required
- MMC snap-in integrates with Windows user database
- Windows-based console
 - User Credential Manager
 - Policy Editor
 - Security Settings
 - Remote Software Installation
 - Software Inventory Reporting

User Credential Manager

- Fingerprint Credentials
 - Supports 1-10 finger(s)
 - Register fingerprint
 - Delete fingerprint template
- Password Credential
 - Enter/change password

Authentication Policy Editor

- Policy control
 - Domain-wide
 - Individual user override
- Editor features
 - Multi-step sequential policies
 - Unlimited steps
 - Any sequence
 - Multi-credential support
 - Fingerprints
 - Passwords

Security Administration

- Security setting levels
 - Domain-wide
 - Individual user override
- Security features
 - Randomize password
 - One time password
 - Credential access rights
 - Event log enable

User Enrollment

- Guided self-enrollment
 - Supervised administrator enrollment
- ## Event Logging
- Logs to Windows security log
- ## System Backup
- Backup server support
 - Automatic backup database synchronization

System Security

- PKI (Public Key Infrastructure) based encryption
- Server based authentication for non-secure operating systems
- Random password generation
- Server-stored credentials
- Integrated into Windows NT / 2000 security architecture
- Multi-credential policies (fingerprint and/or passwords)
- Multi-step sequential policies

